

# Sundyne Genuine Parts

Latest Technology, Higher Reliability, Less Downtime

## Why Use Sundyne Genuine Parts for Sundyne Pumps and Compressors?

- Reliability
- Built to OEM Specs & Tolerances
- Advanced Manufacturing
- Certified Materials of Construction
- Engineering & Troubleshooting Support
- OEM Field Service Support
- Improved Component Life
- Easier Installation & Onsite Repair
- Longer MTBM Intervals
- Easy Replenishment & Inventory Management
- Warranty Protection

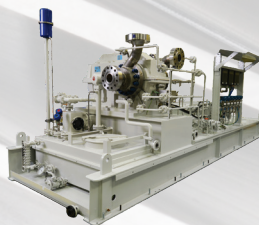
**SUNDYNE DIRECT  
DRIVE PUMPS**



**SUNDYNE INTEGRALLY  
GEARED PUMPS**



**SUNDYNE  
MULTI-STAGE PUMPS**



**LINE MOUNTED  
COMPRESSORS**



**BASE MOUNTED  
COMPRESSORS**

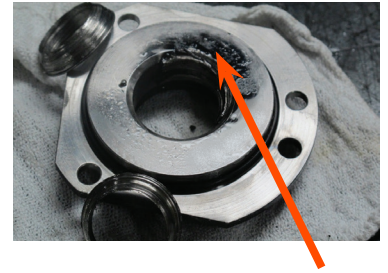


Sundyne Genuine Parts are Manufactured to Unmatched Precision Tolerances



# Do Not Trust Imitation Parts

While it may be tempting to pay a little less for non-OEM replacement parts – it's important to consider the hidden costs of using replicated parts. Any money saved up front on pirated parts will ultimately lead to increased costs for repairs and increased energy consumption.



Radial bearing failure from incorrect oil and oil filtration. Shaft contacts seal body.

Precise tolerances are key to the performance of Sundyne pumps or compressors. Even the smallest variance can generate inefficiencies within a process flow. Using non-OEM components increases the risk of equipment failure, but these risks can be avoided by using Sundyne Genuine Parts. Sundyne parts are machined accurately using advanced metallurgies and they are custom engineered to fit each specific machine. These precise tolerances are backed by decades of testing and development.

## High Quality Standards

Sundyne has recently invested millions of dollars in new tooling and permanent molding to improve the quality and the strength of the Aluminum. This results in a reduction in porosity and improves structural integrity leading to extended maintenance intervals. The manufacturing processes of unlicensed fabricators fall short of Sundyne's standards. They cannot duplicate the tolerances designed into Sundyne products – and non-OEM parts are not checked for dimensional integrity and accurate installation fit.



## 24-hour Support

Sundyne provides factory-based customer service and technical field support to customers 24 hours a day, 7 days a week. Sundyne's extensive network of authorized repair and overhaul facilities use Genuine Parts to return older equipment to like-new condition.

## Warranty Protection

It is critical that customers understand the dangers and risks of using replicator parts in Sundyne machines. Genuine Service and Parts are warranted, and their exclusive use protects the original warranty on existing Sundyne equipment. Additionally, using non-OEM parts can jeopardize ATEX certification and SIL – Safety Integrity Level.

## Costs/Risks of using Non-Sundyne Parts:

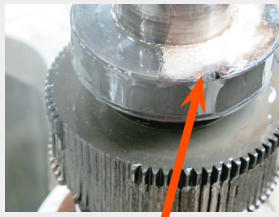
- Costly Process Downtime
- Liability Exposure
- Health and Safety Issues
- Environmental Impact
- Part Replacement Costs
- Repair Costs
- Intensified Vibration Levels
- Increased Noise
- Higher Energy Consumption
- Increased NPSH Requirements
- Rework and Recycle Needs
- Fit and Assembly Problems



Advanced metal corrosion due to cavitation; under the wrong conditions, cavitation reduces the equipment lifetime dramatically.



Up thrust failure from non-OEM "re-manufactured" high speed bearing.



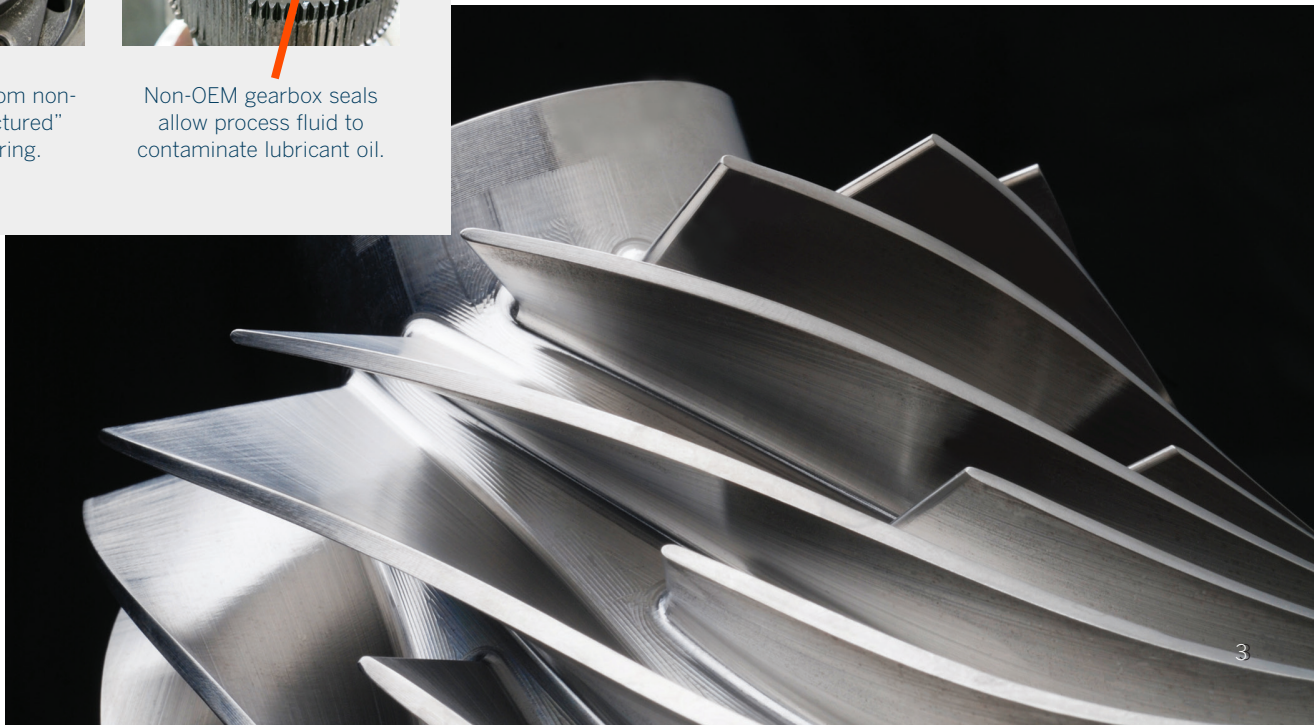
Non-OEM gearbox seals allow process fluid to contaminate lubricant oil.

## Why Customers should use Sundyne Genuine Parts:

- Guaranteed Reliability
- Built to OEM Specs & Tolerances
- Advanced Manufacturing
- Certified Materials of Construction
- Engineering & Troubleshooting Support
- OEM Field Service Support
- Improved Component Life
- Easier Installation & Onsite Repair
- Superior Surface Finish/Flatness
- Warranty Protection



Proprietary designed parts can only be supplied by Sundyne and/or authorized distributors



# Examples Illustrating Why Specifying OEM Parts

A petrochemical plant in Europe used replicated parts in a Sundyne pump that was used for a hot water service. The non-OEM parts were not made to the same tolerances as Sundyne parts. This led to an unstable pump configuration and a lack of lubrication in the gearbox, which caused a failure that forced the petrochemical plant to shut down, resulting in production losses of more than **1 million EUR**. The pump was returned to a Sundyne Repair center on a Friday evening, where the parts were replaced with Genuine Sundyne parts, and the unit was returned to the plant later that weekend. This event took place in 2014: The plant has not had any problems with the pump since this repair.



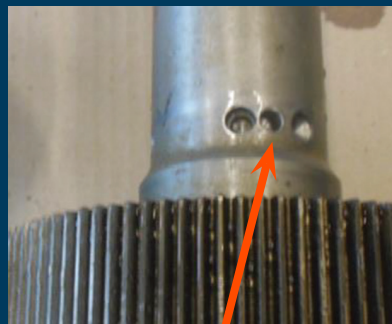
SUNDYNE IDLER SHAFT

NON-OEM IDLER SHAFT



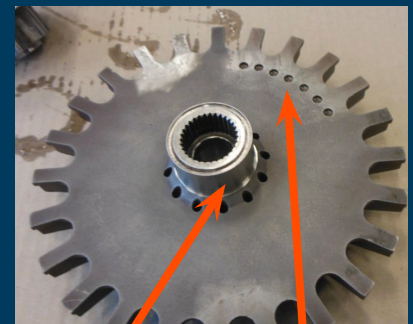
Insert sleeve, foul repair

NON-OEM IDLER SHAFT



Balancing holes not recommended by Sundyne

NON-OEM IMPELLER

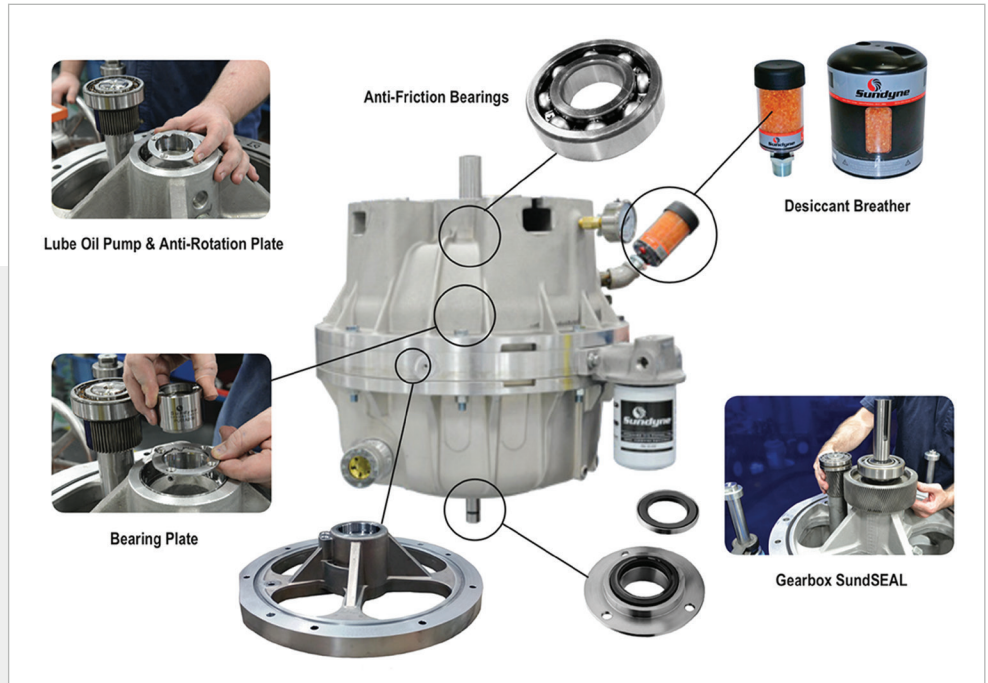


Re-machined surface is an indication of a second hand part

These balancing holes are banned by Sundyne

# is a Better Choice

A third party initiated a repair on a Sundyne gearbox using replicated parts. An obsolete lube oil pump and an anti-rotating pin were used, instead of genuine OEM parts. Less than 8 hours later, the pin sheared away, due to a lack of lubrication, which damaged the gearbox. The damaged pump was sent to a Sundyne repair center, where all the pirated parts were replaced. The repaired pump/gearbox was successfully restarted at the customer site, and since then, the plant has only used genuine Sundyne parts and Sundyne field service.



**NON-OEM ROLLER BEARINGS**



These bearing are very important for an adequate MTBF

**NON-OEM INTERNAL LUBE PUMP**



Not the latest standard and jammed with particles

## Warranty Protection

It is critical that customers understand the dangers and risks of using replicator parts in Sundyne machines. Genuine Service and Parts are warranted, and their exclusive use protects the original warranty on existing Sundyne equipment. Additionally, using non-OEM parts can jeopardize ATEX certification and Safety Integrity Level (SIL).

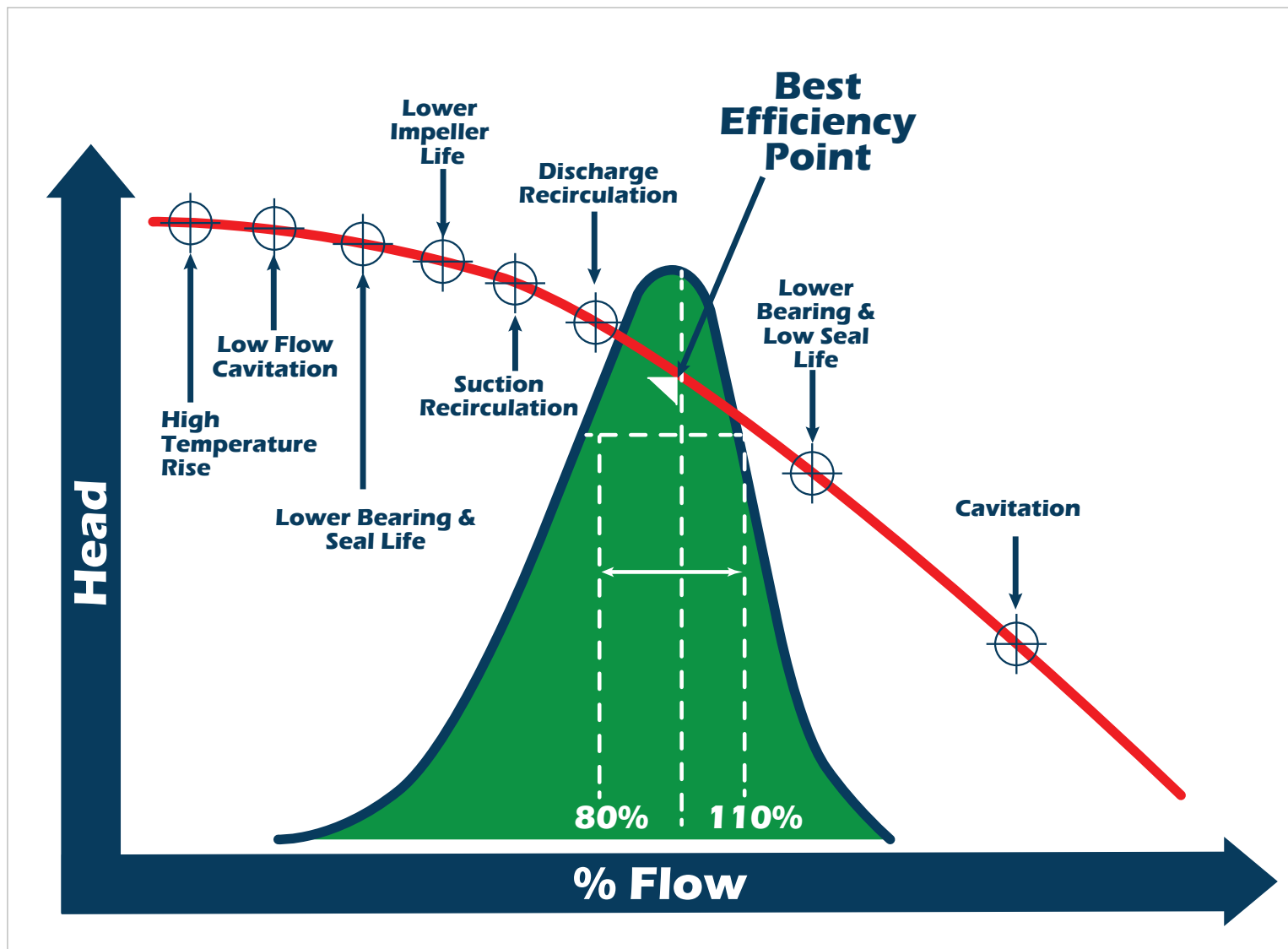
# Do You Know Where You're Running on the Curve?

Running at the designed Best Efficiency Point (BEP) plays a critical role in the mean time between failure (MTBF).

Running off BEP can cause a list of issues and can lead to premature failure of your equipment. The curve shows what potential failure modes can occur when running off BEP.

Using genuine OEM parts helps to ensure that Sundyne Equipment runs as it's supposed to.

Don't Simply Repair – Rerate for Reliability



# Trust Sundyne Genuine Parts for Better Performance, Efficiency and Uptime

Less expensive, imitation parts might do the job here...



But they won't produce the same results here...



If you have any questions about where your Sundyne equipment should be running, contact Sundyne today to schedule a site audit, where expert Sundyne engineers can evaluate how to maximize your time between overhauls. Every overhaul provides an opportunity to re-rate and upgrade existing equipment to the latest design improvements.

## Backed By Global Support

Sundyne is more than just a manufacturer of high quality pumps, compressors and genuine aftermarket parts. Sundyne's highly-engineered solutions are backed with a full range of global aftermarket services that extend the value of Sundyne equipment far beyond the point of sale. The Sundyne service team is here to provide a trouble-free customer experience at every turn. That's **RELIABILITY REALIZED.**

Sundyne's Aftermarket Programs Include:

- 24 X 7 Global Support
- Gearbox Exchanges & Upgrades
- Maintenance Kits
- Conversion Programs
- On-Site SundSCHOOL
- Field Service Support
- Overhaul and Repair Services
- Site Surveys
- Emergency Expedite Services

Benefits of Using Genuine Sundyne Parts	Sundyne Genuine Parts	3rd Party Parts
Latest Engineered Parts & Upgrades for Maximum Reliability	✓	✗
Advanced Manufacturing Processes, Tolerances with Certified Materials	✓	✗
Parts Made to OEM Specs which Equal or Exceed Industry Standards	✓	✗
Direct Manufacturer's Service Support	✓	✗
Retain Existing Sundyne Warranty	✓	✗

## Sundyne: An OSHA VPP Star Site

Environmental Health and Safety (EH&S) is integral to Sundyne's culture. Providing a 100% safe work environment through the manufacturing and installation phases of a project is a core priority. To learn more about Sundyne's extended service offerings, visit [www.sundyne.com](http://www.sundyne.com) or contact us toll free at 1-866-SUNDYNE.



For more information please visit [www.sundyne.com](http://www.sundyne.com) and fill out the Contact Me form. A Sundyne representative will contact you.



### Sundyne Headquarters:

Sundyne, LLC  
14845 West 64th Avenue  
Arvada, Colorado 80007 USA  
Toll Free: 1-866-Sundyne  
Phone: +1-303-425-0800

### Sundyne France:

Sundyne International S.A.  
13-15, Bld. Eiffel - B.P. 30  
21604 Longvic Cedex France  
Phone: +33 (0)3 80 38 33 00  
Fax: +33 (0)3 80 38 33 66

### Sundyne Asia Japan Co., Ltd.

Odakyu Dai-Ichi Seimei Bldg, 6F  
2-7-1, Nishi-Shinjuku Shinjuku-Ku  
Tokyo, 163-0706 Japan  
Phone: +81-3-3344-0911

### Sundyne India

4 + 5, L-Square  
Near Parihar Chowk  
Pune, 411 007 India  
Phone: +91 99870 76165