



## 34X Gearbox Re-rate For Sundyne LMC/BMC Series Compressors

Delivering an extended  
power range of 550HP  
(410kW) in a  
smaller footprint



▲  
The Sundyne LMC/BMC-34X  
550HP Gearbox delivers re-rated  
reliability and horsepower for  
enhanced performance in  
Petrochemical and Midstream  
gas plants.

**Field conversion has  
never been easier!**

# *The Sundyne unique gearbox design boasts 550HP capability in as little as 2 feet.*



## **The Sundyne Flagship**

For over 50 years, Sundyne vertical Line-Mounted and horizontal Base-Mounted (LMC/BMC) integrally gear-driven centrifugal compressors have set the industry standard for high-head, low-flow fluid handling technology. Featuring a modular design with an independent gearbox and wet-end, our engineers custom build every compressor to meet the unique Best Efficiency Point (BEP) of each customer's application. With over one million possible configurations available, our compressors deliver multi-stage performance in a single-stage design.

These API 617 compressors deliver rugged reliability in a compact footprint; equating to maximized uptime, reduced maintenance costs and optimized productivity over the lifecycle of the unit.

Additionally, the horizontally configured compressors are ideal for skid packaging — due to their unique modular baseplate — and are easy to install into any process environment.

Backed by our global network of Authorized Service Centers, Sundyne LMC and BMC compressors are the ideal solution for handling the most demanding high-head, low-flow applications in the midstream, refining, petrochemical, LNG, power and mining industries.

## **NEW Product Features**

The new LMC/BMC 34X 550HP gearbox for compressors boasts new gear material, new bearings and a new lube oil pump. Users enjoy the same great Sundyne advantages of centrifugal compression (*oil-free, no pulsation/vibration, high efficiency, reliability*) with the smallest footprint available in the market. The power capability has been increased by 40% — up to 550 HP (410 kW) on a single stage configuration.

The footprint remains the same for easy field conversion, making the re-rated gearbox an ideal solution for applications like Polyethylene/Polypropylene and Mole Sieve Regeneration.

## **Sundyne Has A Gearbox For A Broad Range of Applications**



**150HP (110kW)** – up to 1,000 psig (70barg)

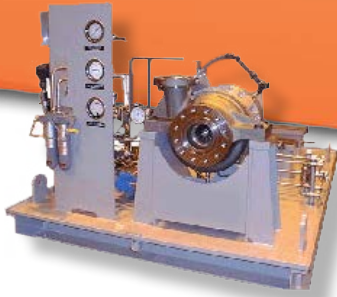


**275HP (205kW)** – up to 1,400 psig (100barg)



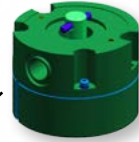
**550HP (410kW)** – up to 1,400 psig (100barg)

- **Short delivery time**
- **Low installation cost**
- **Low OPEX** (minimum power consumption, low maintenance cost)



▲  
**BMC-34X  
Compact Skid  
Packaging**

**Input Shaft  
Separable Gear**



**High Capacity  
Lube Pump**

**Integrally Geared  
Idler Shaft**



▲  
**LMC-34X  
Fit-for-purpose  
Packaging**



▲  
**BMC-34X  
Full API 617/614  
Skid Packaging**

**Idler Shaft  
Separable Gear**

**Integrally Geared  
Output Shaft**

✓ ***New parts and steel alloys for  
long-lasting, reliable performance***

✓ ***Fast, easy field conversion***

✓ ***Simplicity with minimal controls***

✓ ***Finally, a gearbox to fit between  
LOW and MEDIUM duty horsepower***

**SAFE**  
**RELIABLE OPERATION**





### Backed By Global Support

Sundyne is more than just a manufacturer of high quality compressors and pumps...much more. Not only do we offer some of the fastest delivery times in the industry via our new FastLane program, we also back each and every product shipped with a full range of aftermarket support services, extending the value of our highly engineered machines well beyond the point of sale.

The Sundyne service team is here to help you protect your investment and provide a trouble-free customer experience.

### Our Aftermarket Programs Include:

- Expedite Programs
- Maintenance Kits
- Conversion Programs
- Gearbox Exchanges
- Service Schools
- On-Site Service
- Overhaul and Repair Services



Plus, our new Reliability Assurance Kits deliver trouble free maintenance at regular intervals. To learn more about this convenient new service program, visit [www.sundyne.com](http://www.sundyne.com).

### Sundyne: An OSHA VPP Star Site

At Sundyne, Environmental Health and Safety (EH&S) is integral to our culture of excellence, and providing a 100% safe work environment through the manufacturing and installation phases of a project is a core priority.

**RELIABILITY  
REALIZED.**

### COMPRESSORS

### PUMPS

### GENUINE PARTS

### SERVICE



**Sundyne, LLC**  
14845 West 64th Avenue  
Arvada, Colorado 80007  
USA  
1-866-Sundyne  
Phone: 1 303 425 0800  
Fax: 1 303 425 0896  
[www.sundyne.com](http://www.sundyne.com)

**Sundyne PPI**  
201 Ivyland Rd.  
Ivyland, Pennsylvania 18974  
USA  
Phone: 1 215 675 1600

**Sundyne HMD/Kontro Sealless Pumps, Ltd.**  
Marshall Road  
Hampden Park Industrial Estate  
Eastbourne East Sussex, BN22 9AN  
United Kingdom  
Phone: +44 1323 452000  
Fax: +44 1323 503369

**Sundyne Marelli Bombas, S.R.L.**  
Ctra. Madrid-Toledo, Km.30.8  
45200 Illescas  
Toledo, Spain  
Phone: +34 925 53 45 00  
Fax: +34 925 51 16 00

**Sundyne China**  
Building 1, No. 879 Shen Fu Road  
XinZhuang Industrial Zone  
Min Hang District  
Shanghai, China 201108  
Phone: +86 21 50555005  
Fax: +86 21 54425265

**Sundyne International S.A.**  
13-15, Bld. Eiffel - B.P. 30  
21604 Longvic Cedex  
France  
Phone: +33 (0)3 80 38 33 00  
Fax: +33 (0)3 80 38 33 66



All information provided is subject to change without notice.

© 2016 Sundyne, LLC  
All Rights Reserved. Other logos and trade names are property of their respective owners.

Sundyne LMC/BMC 34X Gearbox  
Brochure\_US\_090116: (v.1) POD