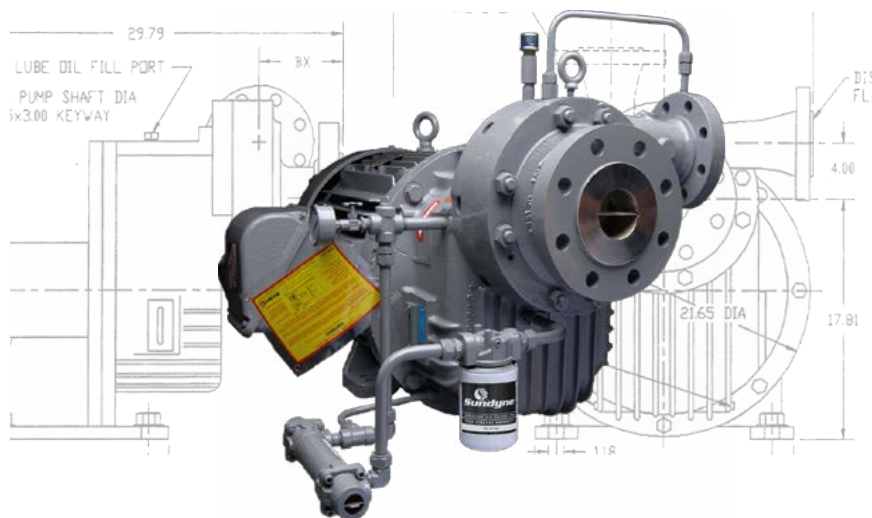




Industrial Grade High-Pressure Pump

Sunflo P-3000



The P-3000 is part of the Sunflo line of industrial grade, high pressure pumps for general service. It extends the performance of the product family by expanding the performance envelope to address ranges that include:

- Flows to 500 gpm (114 m³/hr)
- Heads to 5,200 ft (1,585 m)

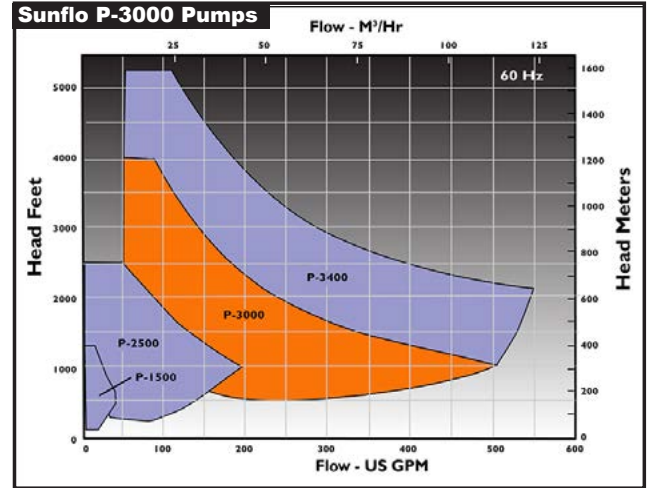
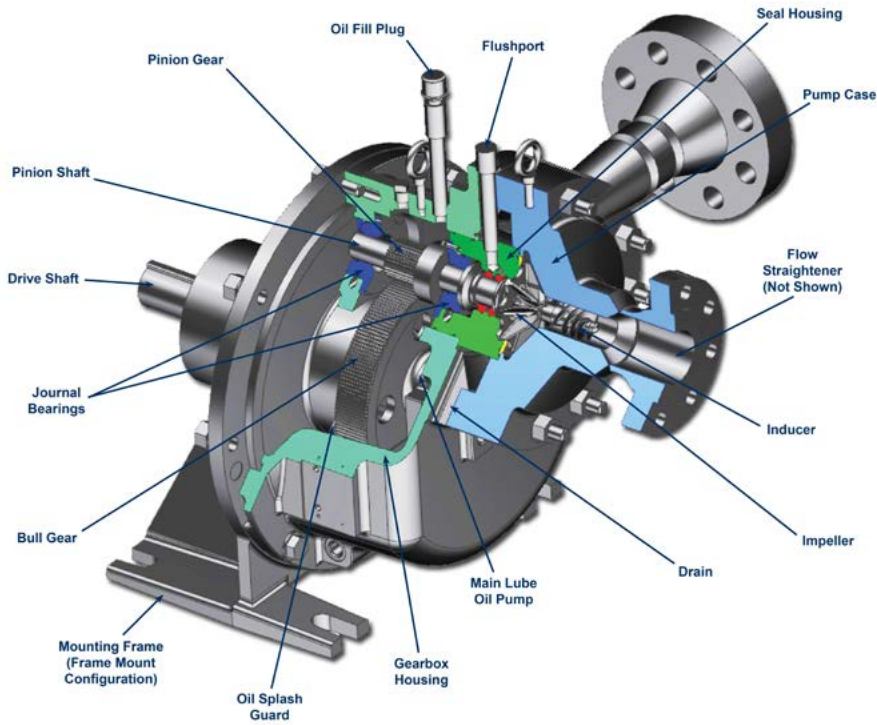
The P-3000 is ideal for high-pressure water applications, including wash water and boiler feeds for powerplants. It is designed to deliver maximized up-time, reduced maintenance costs and optimized productivity over the lifecycle of the unit.

Specifications

Heads To	500 to 4,200 ft	106 to 1,280 m	60HZ: 152 to 1,280 m
Flows To	50 to 500 gpm	9 to 91 m ³ /hr	60HZ: 11 to 114 m ³ /hr
Max Power	250 hp	186 kW	
Temp Range	-50 to 350°F	-46 to 177°C	
Number of Stages	1.0		
Max Case Working Pressure	2,160 psi	152 kg/cm ²	
Max Suction Pressure	350 psi (25 kg/cm ²)		
Standard Delivery	5 Weeks		
Speed Range	6,756 to 17,750 rpm-60Hz		
Materials of Construction	316SS (Duplex SS Optional), Hastelloy, AISI 4140 / 8620 / 9310 Steel, Aluminum or Cast Steel		
Bearing Materials Available	Splash Lubricated, Rolling Element, Pressure Lubricated, Journal Bearings		
Hydrotest Pressure	2,160 psig	151 kg/cm ² g	
Max Viscosity	10 cp		
Solids Range	0.015" (0.381 mm), 400 microns		
Mounting Configurations	Close Coupled, Frame Mounted		
Number of Available Hydraulics	244.0		
Seal Configurations Available	Single, Double		
Available Inducer	Yes		
Available Flanges	600#RF, 900#RF Dishcharge Flange		
Pump Case Corrosion Allowance	Generous Clearances		
Suction and Discharge Size	3" x 2", 4" x 3"		
Seal Plans for Sunflo Pumps	11, 13, 21, 23, 31, 32, 41, 53		

APPLICATIONS

- Boiler Feed
- Petroleum
- Petrochemical
- Food and Beverage Production
- General Industrial
- Oil Production
- Power Generation
- Chemical Processing
- Hydrocarbon Processing
- Refining
- Pulp and Paper
- Manufacturing
- Mining
- Pollution Control
- Power Systems
- Caustic Service
- High Pressure Wash
- Reverse Osmosis
- NOx Suppression
- Water Reinjection



INDUSTRIAL GRADE PUMPS

- **MULTISTAGE PERFORMANCE IN A SINGLE STAGE DESIGN** | Best Efficiency Point is the operating point which is maintained over the life of the pump.
- **CLOSE COUPLED** | Eliminates alignment issues and simplifies installation.
- **LOW NPSH_r PERFORMANCE** | Sunflo inducer technology provides for industry leading low NPSH_r.
- **ROBUST BEARING SYSTEM** | Bearing systems are designed to fully handle all hydraulic loading without dependence on problematic thrust balancing devices.
- **316SS CONSTRUCTION** | Provides corrosion free service in a small package reducing initial installation and life-cycle costs.
- **BARSKE OPEN IMPELLER** | Pump impeller design clearances provide thermal stability thus eliminating pre-warming requirements.
- **MAINTENANCE IN PLACE** | No need to remove and send pump out for repairs, quick removal and replacement of cartridge shaft assembly on site under 2 hours.

Visit our website at: www.sundyne.com